



THE
HOMES
GROUP

Darenth Park Avenue, Dartford, DA2 6JN
Guide price £350,000 - £375,000 Freehold

 2  2  1  C

Guide Price £350,000 - £375,000. The Homes Group are delighted to present to the market this two bedroom house located on the popular Darent Village Park development which is conveniently located for Darent Valley Hospital and the M25/A2 motorway networks.

The accommodation comprises of an entrance hall, cloakroom, kitchen and living room which has double doors opening out to the rear garden. On the first there are two bedrooms and a bathroom.

The property also benefits from two allocated parking spaces and is offered with no forward chain.

We understand the home is subject to an annual service charge - we await confirmation.



Entrance Hall

Ground Floor Cloakroom

Kitchen

9'3 x 6'1 (2.82m x 1.85m)

Living Room

14'5 x 12'7 (4.39m x 3.84m)

Landing

Bedroom One

12'8 x 11'8 narrowing to 8'9 (3.86m x 3.56m narrowing to 2.67m)

Bedroom Two

12'8 x 8'9 (3.86m x 2.67m)

First Floor Bathroom

Rear Garden

45' (13.72m)

Two Allocated Parking Spaces

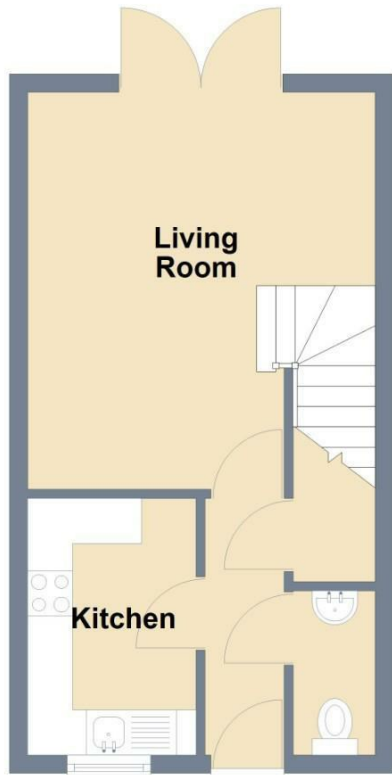
Tenure - Freehold

Council Tax - Band D

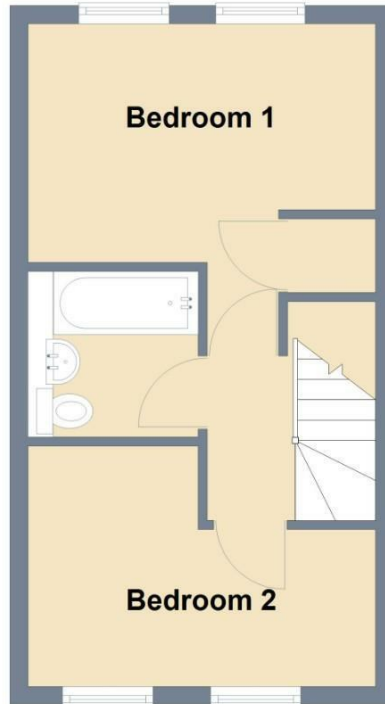




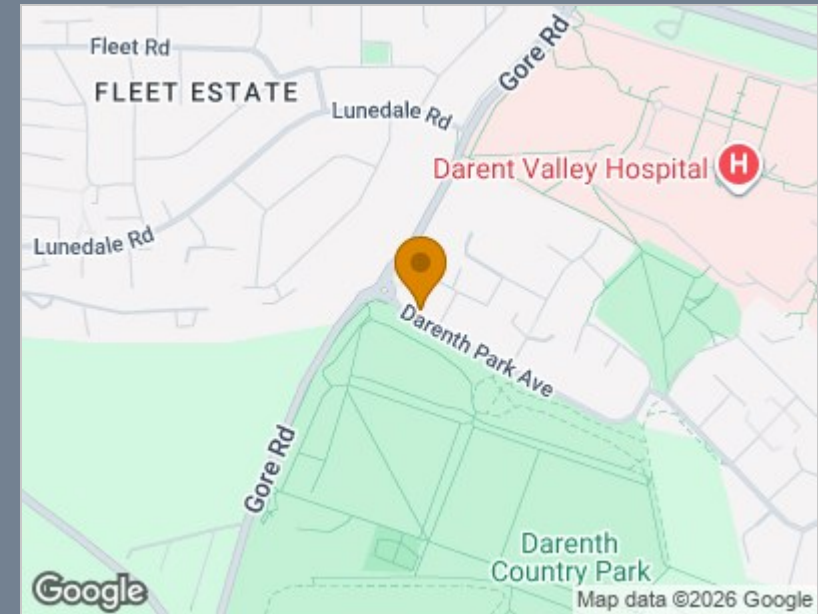
Ground Floor



First Floor



Total area: approx. 56.5 sq. metres (608.5 sq. feet)



| Energy Efficiency Rating | | |
|--|-------------------------|-----------|
| | Current | Potential |
| <i>Very energy efficient - lower running costs</i> | | |
| (92 plus) A | | |
| (81-91) B | | |
| (69-80) C | 71 | 76 |
| (55-68) D | | |
| (39-54) E | | |
| (21-38) F | | |
| (1-20) G | | |
| <i>Not energy efficient - higher running costs</i> | | |
| England & Wales | EU Directive 2002/91/EC | |

Viewing

Please contact The Homes Group Office on 01322 875000 if you wish to arrange a viewing appointment for this property or require further information.

These particulars, whilst believed to be accurate are set out as a general outline only for guidance and do not constitute any part of an offer or contract. Intending purchasers should not rely on them as statements of representation of fact, but must satisfy themselves by inspection or otherwise as to their accuracy. No person in this firm's employment has the authority to make or give any representation or warranty in respect of the property.